



RHL4R-ICAT-RFL4ER

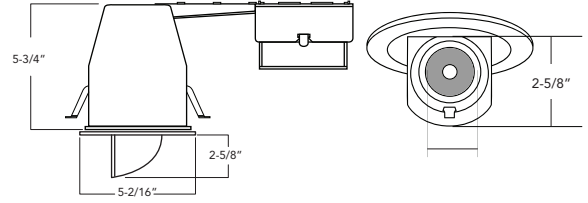
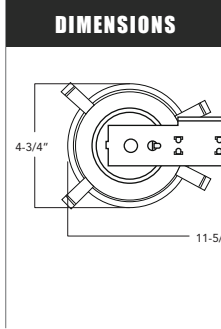
4" LED Round Pull Down
Remodel 0-10V Dimming

PROJECT: _____

MODEL #: _____

LOCATION: _____

CONTACT: _____



USE OF PRODUCT

The RFL4ER Series is the ideal energy efficient LED Recessed module for downlight, wall wash, or accent lighting. This item can be used in existing, remodel, or new construction housings. The LED 4" Pull Down is great in environments where light needs to be controlled such as to focus on artwork, displays, objects, etc. The RFL4ER series will reduce energy consumption, emits little heat, and reduces cooling loads for added cost savings.

CONSTRUCTION

- Lumens: 830 Lumens
- Finish: White, Black, Satin Nickel and Bronze
- Wattage: 12 Watts
- Voltage: (120V standard); 120-277 (with optional 0-10V dimming driver)
- Color Temperature: 2700K, 3000K, 3500K, or 4000K
- R9 Value: 85
- Color Rendering Index: 93 CRI Typical
- LED Life: 50,000 hours
- LED Type: Cree LED for maximum light output
- Versatility: Interchangeable lens available in 19° and 38°; 365° horizontal rotations 65° vertical drop from nadir.
- EM Battery: 90 min, 800 delivered lumens.
- Warranty: 5 Year Limited Warranty

LED DRIVER

Durable 120-277V dimmable driver provides high power factor with the optimum thermal management to prevent damage caused by high temperature. Externally mounted LED driver provides for easy maintenance and convenient replacement.

EMERGENCY BATTERY

Optional emergency back-up may be ordered separately. Unit operates for 90 minutes with LED modules up to 20 Watts and is Damp location rated, 120/277AC operational, 800 delivered lumens.

DIMMING

Available in 8 driver selections. Standard Triac/ELV, 120V. (018) 0-10V dimming in 800 lumens, 120-277V. (PEQ0) Lutron Hi-Lume Premier Ecosystem 0.1% w/soft on, fade to black dimming, 120-277V. (LDE1) Lutron Hi-Lume 1% Ecosystem with soft on, fade to black dimming, 120-277V. (LTE) Hi-Lume 1% 2-wire, 120V (L3DA) Hi-lume 1% EcoSystem/3-Wire L3D Driver (EEI) eldoLED Eco 1% Dim (0-10V), 120-277V. (EDIO) eldoLED Solo 0.1% Dim(0-10V), 120-277V. (EDID) eldoLED Solo 0.1% Dim(DALI), 120-277V.

BEAM OPTION

- lens available in 19° and 38° beam angle
- Interchangeable lens and field replaceable
- Comes with clear lens cover.

HOUSING CONSTRUCTION

- Minimum Clearance "IC" or insulated ceiling housings are rated for direct contact with insulation. No minimum clearance is required.
- Ceiling Thickness: Up to 1 1/4"
- Bar Hangers: Bar Hangers are adjustable from 13-5/8" to 25" and can be repositioned to 90°.

- Junction Box: Junction box is listed for through branch circuit wiring and contains seven 7/8 knockouts and four ROMEX pryouts with strain relief.
- Plaster Frame: Galvanized steel construction

MODULE MECHANICS

Fixture provides 359° horizontal rotation within module and 65° vertical drop from nadir.

LABELS/COMPLIANCE

- CSA Classified
- Can be used for State of California Title 24 high efficacy luminaire compliance.
- JAB certified

ORDERING INFO

RHL4R-ICAT	RFL4ER	8L				
Series	Module	Watts/Lumens	Color Temp.	Dimming	Finish	Beam Angle
RHL4R-ICAT - 4" IC Air Tight Remodel LED Housing	RFL4ER	8L - 800 Lumens (120V)	27 - 2700K 30 - 3000K 35 - 3500K 40 - 4000K	Leave blank - Triac/ELV 018 - 0-10V Dimming (800 lumen) LDE1 - Lutron Hi-Lume 1% Ecosystem with soft on, fade to black dimming PEQ0 - Lutron Hi-Lume Premier Ecosystem 0.1% w/soft on, fade to black dimming LTE ¹ - Hi-Lume 1% 2-wire L3DA - Hi-lume 1% EcoSystem/3-Wire L3D Driver EEI ² - eldoLED Eco 1% Dim (0-10V) EDIO ² - eldoLED Solo 0.1% Dim (0-10V) EDID ² - eldoLED Solo 0.1% Dim (DALI)	W - White BL - Black BZ - Bronze	19 - 19° 38 ³ - 38°

Options

- 347SDT - 347V Step down transformer
- EM - Emergency back-up

1. 120V only.
2. Must specify logarithmic or linear eldoLED driver.
3. Standard beam angle

4" LED 0-10V Dimming



www.rayonlighting.com
info@rayonlighting.com

tel: 323.446.2626
fax:323.446.2606

Specification and product availability
subject to change without notice

REV. 01/2025